

Overcoming Hardships Caused by the Earthquake and Tsunami

Japan ALS Association

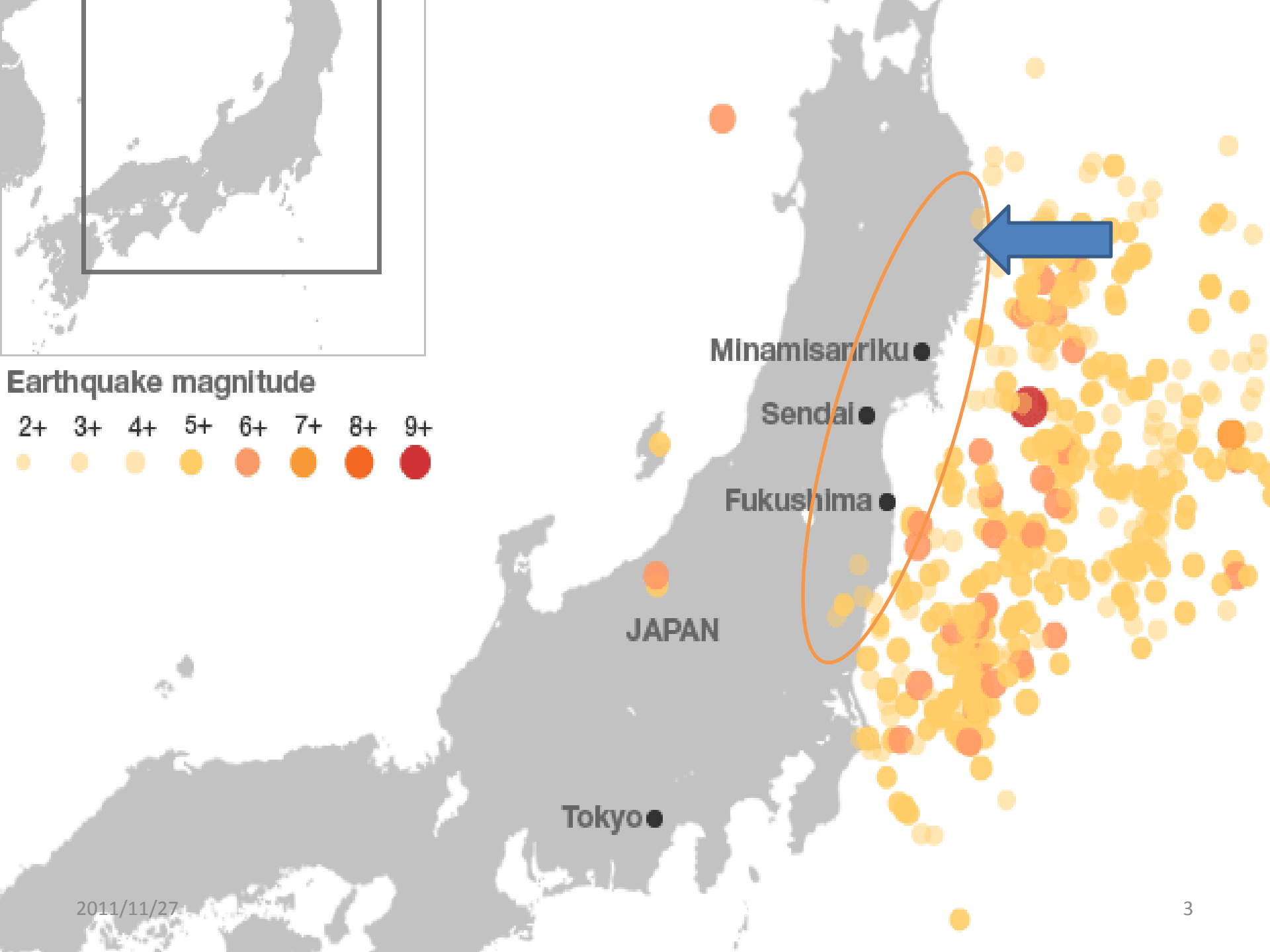
Yoshiyuki Nagao

Yumiko Kawaguchi

Hello everyone. My name is Yoshiaki Nagao. I am from Japan. Let me begin by expressing, on behalf of all Japanese ALS patients, our profound gratitude for the generous assistance we received from your countries after the Tohoku earthquake. We were deeply moved by your compassion. Our country is on a fault line, and earthquakes are a constant worry. We cannot know what will happen in the future, but I hope our shared dreams and sympathy for each other will continue to bind us all together in a global society.

As a small token of our gratitude, I designed a card on my computer and left one for each of you on your table.

Once again, thank you very much for all that you have done.



JALSA Tohoku Earthquake Committee



1. Gathered information from local members
2. Made emergency requests to the Government
3. Gave information to the mass media
Appealed to the public for assistance

JALSA Tohoku Earthquake Committee

4. Collected donations in public spaces.



JALSA Tohoku Earthquake Committee

5. Gave information to people overseas via FB.

6. Transported relief materials, removed mud, Provided assistance with bathing and house cleaning.



JALSA Tohoku Earthquake Committee

7. Found places to stay for
PALS and caregivers

8. Supplied batteries.

In some areas there
were planned 3 hour
power outages every day.



Lessons learned for PALS living at home

- ✓ Be able to survive on your own for 3 days.
- ✓ Keep water in your bathtub to use in your toilet.
- ✓ Ensure there is power for the ventilator first.
- ✓ Secure power for air mattresses, lights, mobile phones, etc.
- ✓ Caregivers will not be able to get to you.

Lessons learned for PALS living at home

- ✓ Gasoline in your car can be used to generate electricity for your ventilator.
- ✓ Make sure you have a foot-operated suctioning machine.

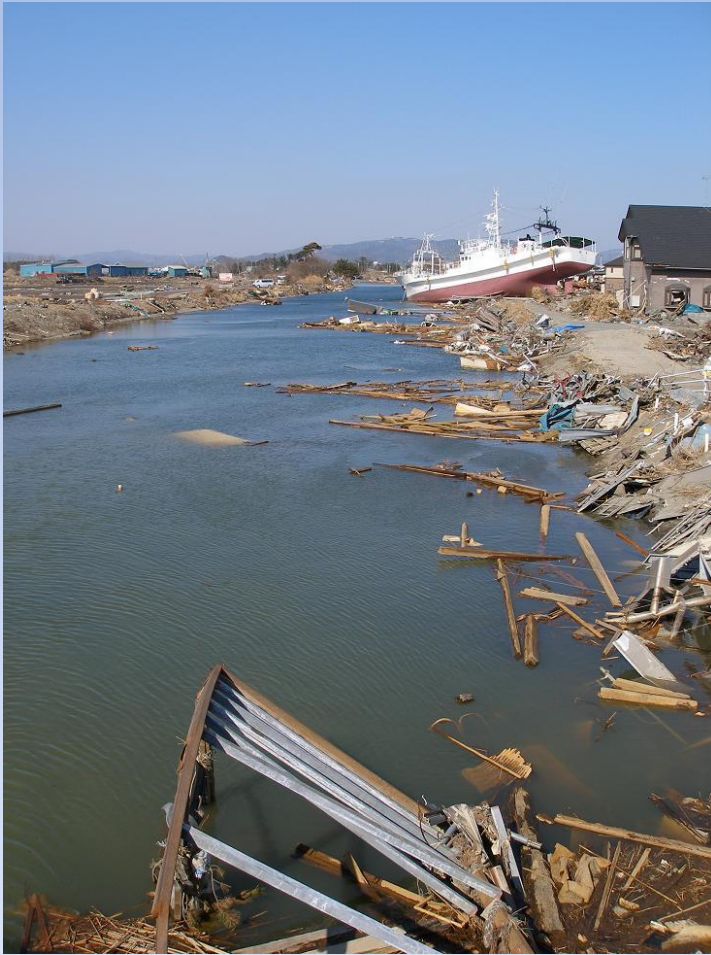


Lessons learned concerning PALS at home

- ✓ You may be more comfortable at home than in a hospital or evacuation center.
- ✓ It is important to have friends in your neighborhood.
- ✓ Twitter can be used to relay important information.



Saito Hospital in Ishinomaki city



1.5 tons Ensure Liquid from Taiwan



Local branches collected relief supplies on their own and transported them to the affected areas by cars



2011/11/27



How were your donations used?

- A total of roughly 12,000,000 JPY (156,000 USD 99,000 GBP) has been donated so far.
- About ¥500,000 (6,500USD, 4,100GBP) was given to local branches in Fukushima, Miyagi and Iwate.
- ¥100,000(1,300USD,820GBP) was given to each PALS who had suffered a severe hardship (33 individuals) .

How were your donations used?

- ¥30,000 (390USD,247 GBP) was given to each member belonging to one of the three most affected branches (92 individuals in total) .
- ¥456,000 (5,950 USD, 3,760 GBP)was used to deliver or transport emergency relief supplies.
- The remaining funds have been pooled to create a third allotment.

It is important for ALS/MND Associations

To call on patients and their families to
make sure they are always well prepared
for whatever might happen.



Disaster Preparation Checklist for Urban Areas

- Created by our Tokyo branch

Earthquake magnitude

2+ 3+ 4+ 5+ 6+ 7+ 8+ 9+

- Designed to help PALS make sure they are always well prepared for whatever might conceivably occur.

Thank you