



The Light That Will Never Dim

Life Education Lecturer (LEL) Project

The Light That Will Never Dim

Beyond ALS, My Colorful Life



超越漸凍
彩繪人生



微光不息

nt, Appreciate

Background

How to implement it?

How to fund it?

Difficulties

Feedbacks

Conclusion

Life Education Lecturer (LEL) Project

Origin

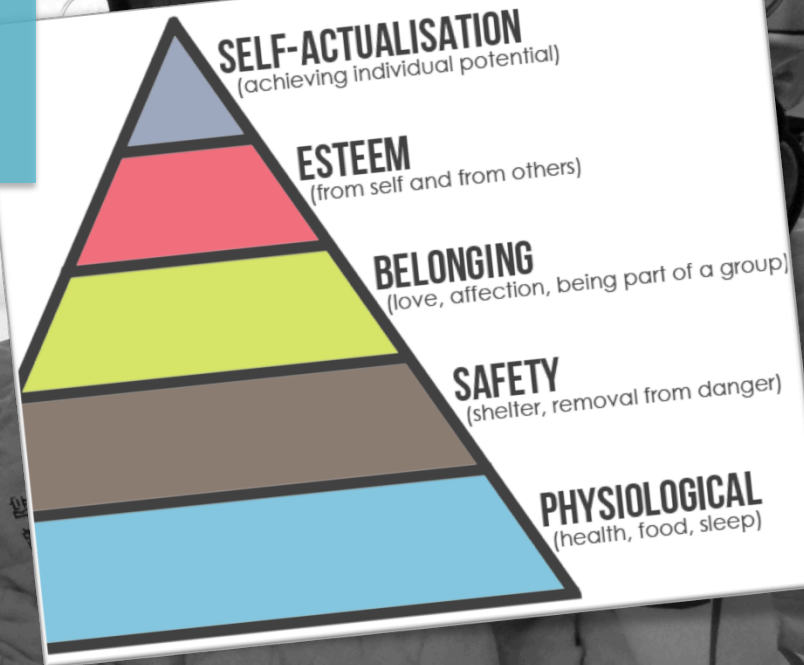


1 → 11 LE lecturers

Less than 10 → more than 100 speeches

Background

Intellectual abilities, inner strengths, and higher level needs might be neglected

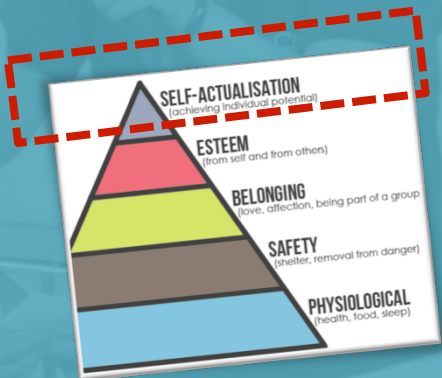




Search the meaning of life
Connect with other people
Give back to the society
...

Life Education Lecturer (LEL) Project

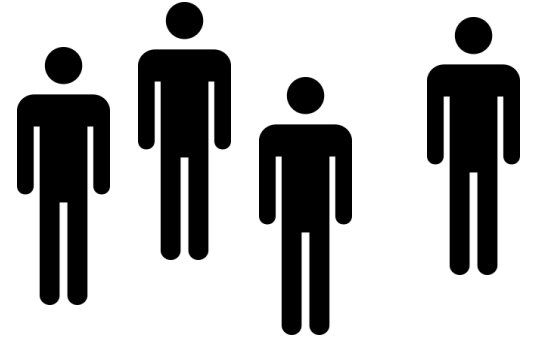
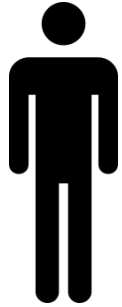
Benefits



How to implement it?



+



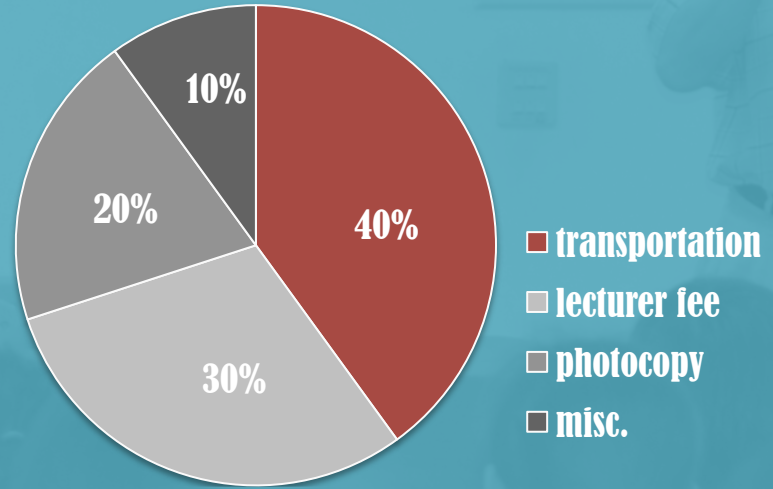
Life Education Lecturer

Assistant Lecturer

**Audience: Schools, companies,
organizations**

How to fund it?

Funds: donation,
grants from the Education Ministry



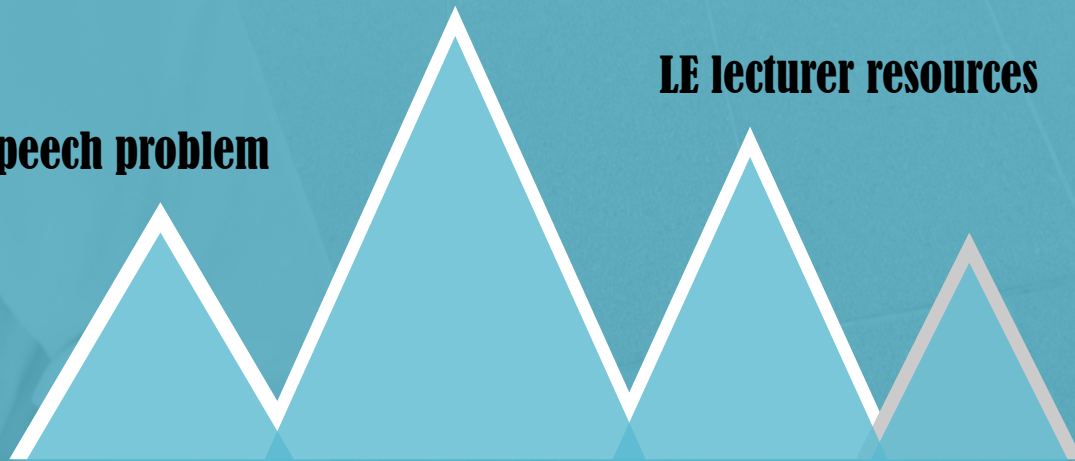
Expenses

Difficulties

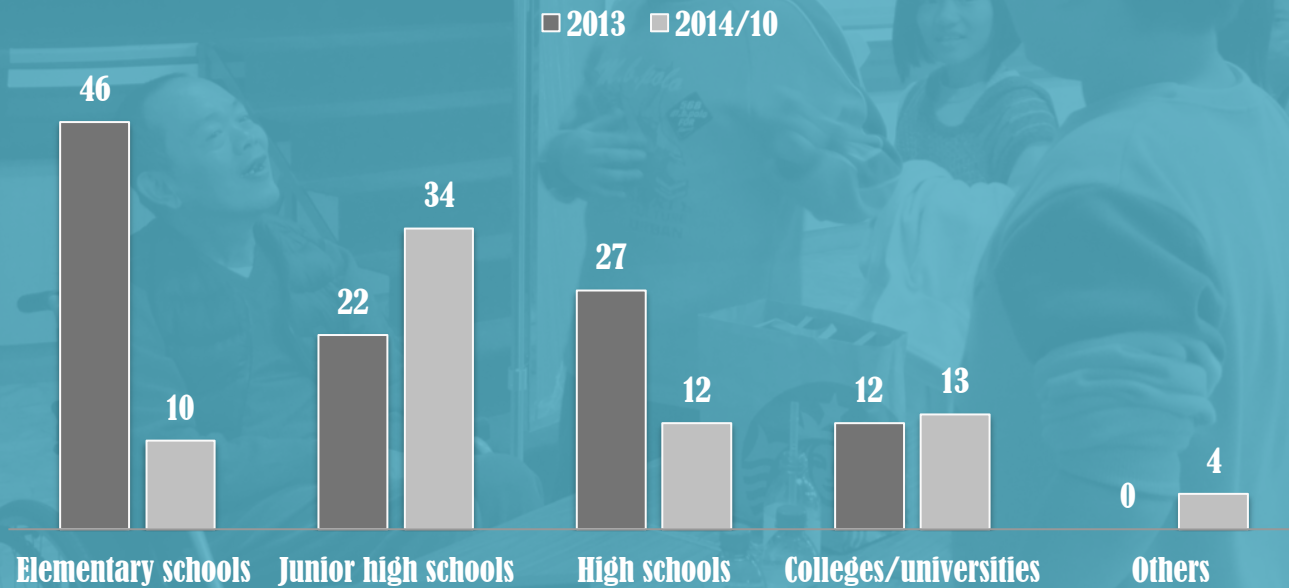
Speech problem

Physical endurance

LE lecturer resources



Summaries



2012 03 13



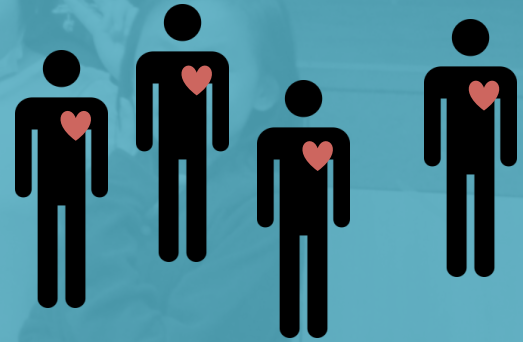
A heart-touching and memorable moment, when audience came to say thank you.

Feedbacks - audience

“I got more knowledge about ALS. I want to become a volunteer for TMNDA.”

“I was blown away. I’ll definitely cherish what I have.”

“I have no excuse to give up. No matter what happened, I’ll remember there are people working so hard with a broken life.”



Feedbacks - lecturers

“Though I’m physically ill, I still can contribute to our community and society.”

“It took at least five hours each time, and I felt very tired. But, looking at the young faces and gentle hearts, I knew it was worthy to do so.”



Conclusion

- **Simple and easy to carry out**
- **Beneficial to both PALs and the society**
- **Low investment high returns**